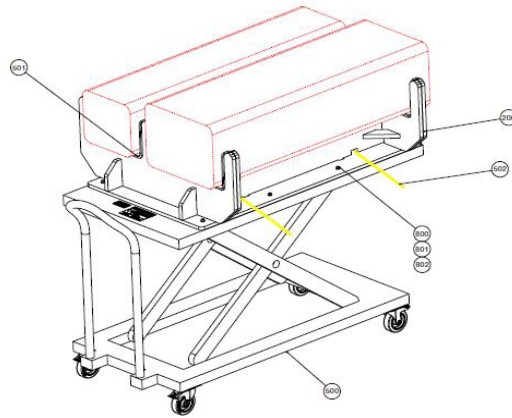
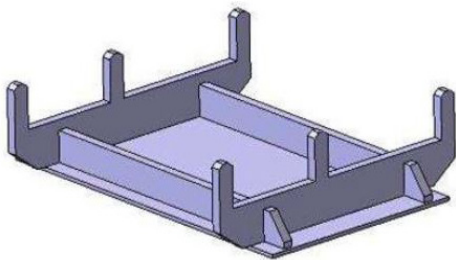


# > S8602T407A0101E01

## LIFT TABLE SUPPORT FOR TIGER PODs



### DESCRIPTION

This tooling consists of a wheeled table to store and move the Pod HLF. The cradle allows storage side by side of 2 PODs (width 333 and 472 mm).

It includes:

- a lift table
- a support cradle with two flanks fixed on the tray table



### KEY FEATURES

- Max weight: 500 [kg]
- Overall length of lift table: 1820 [mm]
- Overall width: 810 [mm]
- Table thickness: 56 [mm]
- Maximum lift: 915 [mm]
- Minimum height: 286 [mm]
- Wheel dimensions: 127 x 25 [mm]
- Handle height: 990 [mm]

### SIZE

160 x 81 [cm]  
5.24 x 2.65 [ft]



### WEIGHT

159 [kg]  
350 [lbs]



### APPLICABILITY

TIGER

#### CONTACT US

+33 467 455 564

150, Rue Maurice Béjart - 34080 - Montpellier, FRANCE

contact@kit-aero.com / www.kit-aero.com

